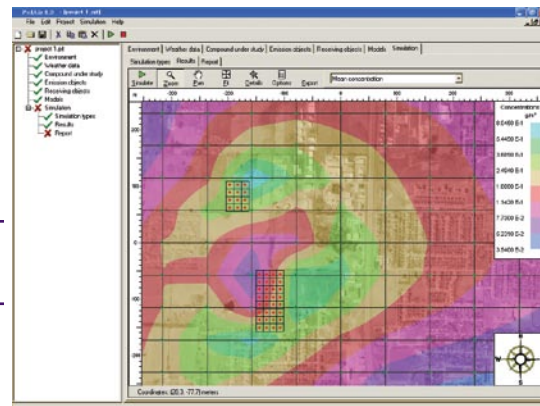


POLAIR

Models the atmospheric dispersion of pollutants.



If you currently work with -or need- atmospheric dispersion software, you will find PolAir[®] 4.2 excellent value-for-money. One frequently asked question is why we have priced such a capable product so low. The answer is simple: we want PolAir[®] to become one of the industry leaders.

What is PolAir[®] 4.2 used for?

PolAir[®] 4.2 is used in assessing the environmental impact of atmospheric pollution emissions. For instance, it can be used to:

- Evaluate the impact of industrial establishments
- Evaluate abatement criteria at the source
- Manage industrial operations under different weather conditions
- Design stacks
- Identify critical sources for reducing pollutant emissions
- Determine taxation criteria
- Regulatory obligation evaluation
- Assess regulatory compliance

Who uses PolAir[®] 4.2?

Environmental Consultants & Engineers, government bodies, industry, academic institutions and citizen associations.

- Municipalities: waste disposal site management
- Government Ministries/Agencies/Laboratories
- Industrial firms
- Pulp and paper: management of kraft paper plants and sludge disposal
- Petrochemical plants
- Industrial associations
- Environmental consulting engineers and services
- Neighbourhood committees

For more information:
www.odotech.com

POLAIR

Models the atmospheric dispersion of pollutants.

Modeling Environment

- Import a map of the assessment target site in various graphic formats.
- Select rural or urban receptor environment for automatic parametrization of the various atmospheric dispersion models.

Meteorological Data

- Import meteorological data text files comprising (for each datum): date, time, wind speed, wind direction, temperature, atmospheric stability class, urban mix height and rural mix height.
- Wind speed profile correction for each receptor environment and for each atmospheric stability class.
- Display meteorological data as wind rose and stability rose for the various daily periods (day, evening, night).

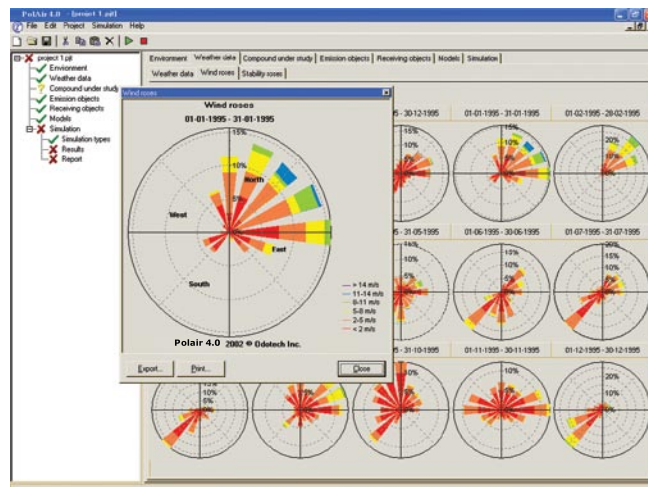
Sources

- Choice of sources: emission point or stack, emitting surface, instantaneous source.
- Source characterization: height, diameter, length, width, mass or surface flow rate, gas ejection velocity, gas temperature, time variability of flow.

Modeling

Choice of atmospheric dispersion models:

- Gaussian
- CUM (Montreal) model under By-Law 90
- Puff



Chemical Compound Assessed

- Choice of chemical compound to be assessed from a large evolutive data base comprising over 400 chemical compounds and including information on terminal velocity, toxicity thresholds, lower limits of explosivity and flammability, and the exposure thresholds of various standards.

Receptors

- Choice of receptor: point, line, surface.
- Receptor characterization: dimensions, measurement height.

System Requirements

- Windows 2000/XP compatible
- About 50 MB of hard disk space for initial installation
- Pentium processor compatible (500 MHz recommended)
- 8 MB video card memory (32 MB recommended)



Odotech Inc. is a leading designer and producer of odour measuring and monitoring systems.

3333 Queen Mary Road, Suite 301, Montreal, QC, Canada H3V 1A2 Tel.: 514 340-5250 Fax: 514 340-5211 www.odotech.com

Copyright © 2008 Odotech Inc. Polair is a trademark of Odotech Inc.